

PRODUCT CATALOGUE

Innovative, reliable LiftMaster solutions give you the selling advantage.



GARAGE DOOR OPENERS
EFFECTIVE JULY 2018

LiftMaster

INDEX.

LIFTMASTER THE BRAND FOR THE PROFESSIONAL.....3

SMART CONNECTIONS - THE SMART SOLUTION FOR YOUR BUSINESS.....3

DESIGN MEETS TECHNOLOGY.....4

CONVINCING PRODUCT FEATURES.....4

QUALITY PROMISE.....4

GARAGE DOOR OPENERS WITH MYQ TECHNOLOGY.....5

SET-UP MYQ.....5

LIFTMASTER WORKS WITH NEST.....5

GARAGE DOOR OPENERS.....

- LM130EVF.....6,7

- LM100EVF.....8,9

- LM80EVF.....10,11

- LM60EVF.....12,13

- LM55EVF.....14,15

EVOLUTION GARAGE DOOR OPENERS OVERVIEW.....16,17

LM3800TX.....18,19

LM650EVGB.....20,21

ACCESSORIES.....

- C-RAIL.....22

- RAIL EXTENSIONS.....22

- REMOTE CONTROLS.....22,23

- WALL CONTROLS.....23

- CONVENIENCE DEVICES.....24

- SAFETY DEVICES.....24,25,26

- QUICK RELEASES.....26

- KEY LOCK DEVICES.....27

- BATTERY BACK-UP.....27

- CANOPY DOOR ARM.....27

- RECEIVER.....28

- OTHERS.....28

SERVICE & CONTACT.....29

LIFTMASTER.

The brand for the professional.



LiftMaster is a brand by the Chamberlain Group. As a leading provider of convenience and security products for homes and businesses worldwide, Chamberlain's strong foundation emanates from the millions of products manufactured and sold since the early 1960s. Around the world, there are more Chamberlain openers installed than any other brand.

LiftMaster's residential products offer a broad selection in terms of performance, features, and durability. They are made to suit the expectation of a professional installer to provide excellent service to homeowners.

They are also proven to withstand even the harshest of elements and years of extended use and are available with innovative accessories designed to make home access even more convenient.

SMART CONNECTIONS.

The smart solution for your business.



SMART **CONNECTIVITY**



SMART **PRODUCTS**



SMART **PARTNERSHIPS**



SMART **BUSINESS**



SMART **IDENTITY**



SMART **IDEAS**

SMART CONNECTIVITY:

Our smart connectivity solution MyQ is intuitive, reliable, secure and independent.

SMART PRODUCTS:

Smart products such as our MyQ compatible garage door openers will make you more competitive.

SMART PARTNERSHIPS:

Smart strategic partnerships with Google Nest, Apple and many more deliver decisive competitive advantages.

SMART BUSINESS:

You benefit from smart business solutions that include our sales app and digital media portal.

SMART IDENTITY:

With the world's market leader LiftMaster, you can rely on a global player with a strong and smart identity.

SMART IDEAS:

Smart ideas such as the integration of MyQ technology in vehicles help you to prepare your business for the future.

SMART CONNECTIONS. | **LiftMaster®**

DESIGN MEETS TECHNOLOGY.

The state-of-the-art design of the Evolution line is the winner of a consumer design study. 10 design concepts were presented to ~1,000 consumers in 5 different countries in Europe.

Sustainability, innovation and design are supported by an increased travel speed, a fine set of accessories and warranty periods up to 10 years. This combination is second to none and will provide the user with the great experience one can expect from a world market leader.



CONVINCING PRODUCT FEATURES.



MyQ provides revolutionary technology for sectional garage doors automation. MyQ will make life easier as it allows monitoring and controlling the garage door from anywhere in the world by smartphone, tablet or computer.

0,8W

Sustainability – the low standby power consumption corresponds to savings of €10,00 per year compared to the majority of garage door openers that are installed around the world.



The quiet and smooth operation is second to none, too – try it out!



Evolution Radio (Security+ 2.0) provides the most reliable frequency we ever offered. Evolution garage door openers are equipped with our best radio performance ever.



Saving up to 50% installation time. With only using one size tool, you can assemble the complete installation within seconds.



Long-lasting LEDs (up to 50,000 hours of service), no warm up phase, so the light is bright immediately.



We also increase the warranty period to a maximum of 10 year (LM130EVS) to demonstrate that LiftMaster provides premium quality products.



The LiftMaster LM80EVF and LM100EVF models have an opening speed of max. 200mm/s which puts them in pole position in our portfolio.

QUALITY PROMISE.

The quality mission of LiftMaster is to exceed the expectations of our customers by providing exceptional products and services. We put quality at the forefront of everything we do, understanding that each of us is accountable and committed to continually improving the effectiveness of our Quality Management System and achieving quality objectives.



GARAGE DOOR OPENERS WITH MYQ TECHNOLOGY.



Confidently know what's going on at home with MyQ technology.

We have a full range of products that helps the homeowner to monitor and control the garage door or gate by connecting with smartphone, tablet or computer.

Staying connected and in control has never been easier.



SET-UP MYQ.



1. Connect:

Connect the provided ethernet cable to your router. Use the plug valid for your country (not all models). Connect power to the internet gateway. When the internet gateway connects to the internet the green light will stop blinking and will light solid.

2. Create an account:

Visit myliftmaster.eu to create an account. If you already have an account, use your login and password.

3. Register gateway:

Enter the Serial Number from the gateway (see label on the backside of the internet gateway).

4. Add MyQ Devices:

Use an internet enabled computer or smartphone to add devices. After you add a device, the blue light on the internet gateway will appear and stay on. For smartphones: Apps can be downloaded free of charge.



LIFTMASTER WORKS WITH NEST.



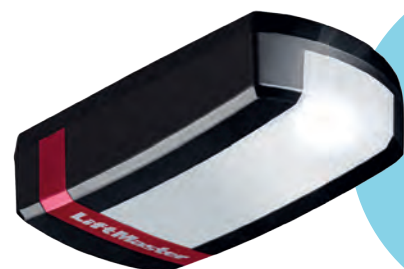
LiftMaster's MyQ technology is one of the Technology Partners that integrates with Nest Learning Thermostat and the Nest Cameras interact. LiftMaster MyQ users are able to set their Nest Learning Thermostat and Nest Cam using the MyQ app.

LiftMaster



LM130EVF MYQ DC GARAGE DOOR OPENER

Maintenance-free, ultra-quiet including safety sensors and LED light.



KEY FEATURES

SPACE-SAVING

Design maximizes versatility

LED LIGHT

LED turns on with activation

HEAVY LIFTING

For doors up to 200 kg

MYQ

Built In



SMART

SPACE-SAVING DESIGN OPENS UP THE CEILING.

BELT DRIVE SYSTEM FOR POWERFUL PERFORMANCE.

SOFT-START AND SOFT-STOP FOR SMOOTH OPERATION.

MYQ MOBILE APP LETS USERS RECEIVE ALERTS AND CONTROL THE OPENER FROM ANYWHERE.

QUIET AND RELIABLE

QUIET DC MOTOR ELIMINATES NOISE AND VIBRATIONS THROUGH THE CEILING AND PROVIDES SMOOTH OPERATION.

HEAVY-LIFTING POWER OPERATES DOORS UP TO 200 KG.

MAINTENANCE-FREE BELT DRIVE ENSURES QUIET & DURABLE OPERATION.

WARRANTY MOTOR: 10 YEARS, CONTROL BOARD: 5 YEARS, ACCESSORIES: 2 YEARS.

SECURE & SAFE

AUTOMATIC GARAGE DOOR OPENERS IMPEDE UNAUTHORIZED ACCESS TO THE GARAGE.

TIMER-TO-CLOSE AUTOMATICALLY CLOSES THE DOOR AFTER A PRESET AMOUNT OF TIME.

EVOLUTION RADIO (SECURITY+ 2.0®) SENDS A NEW CODE WITH EVERY REMOTE CLICK.

AUTOMATIC FORCE SETTING & OBSTACLE DETECTION.

FAILSAFE INFRARED SENSOR AUTO-REVERSES THE DOOR IF THERE'S AN OBSTRUCTION.

INCLUDED ACCESSORIES:

4-CHANNEL REMOTE CONTROL

Operates up to 4 openers. Compact to provide quick, easy garage access.



TX4EVF

2-BUTTON WIRELESS WALL CONTROL

Operates up to 2 openers. Control your garage door without a remote control.



128EV

FAILSAFE SAFETY SENSOR KIT

Incl. wall mount and cables. LED indicates the IR sensors continuity.



771EVK

POWERFUL ADD-ONS:

INTERNET GATEWAY

MyQ technology that connects to the internet and allows monitoring and control of the garage door opener.



828EV

GARAGE DOOR MONITOR

MyQ enabled technology allows monitoring and closing up to four garage doors from any room in the house.



829EV

WIRELESS KEYPAD

Provides convenient, secure access from outside the garage with a 4-digit PIN, temporary PIN possible.



747EV

LED FLASHING LIGHT

Lamp flashes while the drive is in action. Applicable for all garage door and gate door openers.



FLA1-LED

MASTERFUL ENGINEERING.

MOTOR

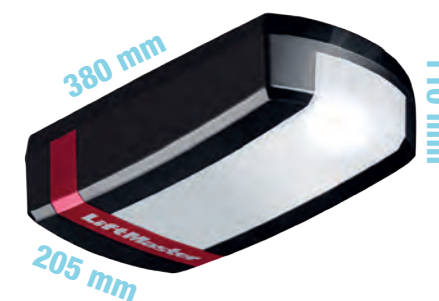
- Heavy-Duty 24 V DC
- Automatic Thermal Protection
- Permanent Lubrication
- Operating Temperature: -30°C to 55°C

POWER

- 230-240 V AC
- 50/60 Hz Voltage
- 0.8 W Stand-by Power
- 80 cm Power Cord (Euro plug)¹

MECHANICS

- **High Quality** Chassis and Cover
- **Reliable & Quiet** Belt Drive Mechanism
- **Automatic** Force Setting
- **Electronic Limits** for Easy Setup
- **Maintenance-Free** Operation thanks to Belt Drive
- **90° Rotation of Power Head** for Space Saving



110 mm

380 mm

205 mm

MYQ DC GARAGE DOOR OPENER
FOR DOORS UP TO 200 KG.

1300N

STANDARD SPECS.

SECURE

EVOLUTION RADIO (Security+ 2.0®)

High Range:



- 4-Button Remote Control (TX4EVF)
- Remote Control: 868 MHz Tri-Band²
- Garage Door Opener: Frequency Agile on 433 and 868 MHz
- Copy-Protected Coding

SMART

MyQ RADIO

433/868 MHz

- Provides 2-way communication from garage door opener and MyQ accessories.
- Enables monitoring and control of garage door openers controls via smartphone, tablet or computer.
- Receiver with 180 memory registers.

HOMELINK® COMPATIBLE
(VERSION V OR SOFTWARE REV. 8)²

ELECTRICAL

LIGHTING LED LIGHT



- LED turns on with activation
- Turns off 2.5 minutes after operation
- 0.8 W Stand-by Power

Max.
130 mm

Per second
for door
to move
upward

Max.
130 mm

Per second
for door
to move
downward

SHIPPING.

SHIPPING WEIGHT (in kg)



CARTON: 39.6 cm x 24.3 cm x 24 cm

- Garage Door Opener Head (1300N)
- Two 4-Button Remote Control (TX4EVF)
- 2-Button Wireless Wall Control (128EV)
- Failsafe Safety Sensor Kit (771EVK)

SAFETY AND SECURITY.

- External Quick Release (optional)
- Automatic Trolley Reconnect
- Down Safety Reverse
- Up Safety Stop
- Flashing Light Connector
- Door-in-Door Connector
- Timer to Close (automatic close) Programming (when safety sensors connected)



¹ UK adapter available.

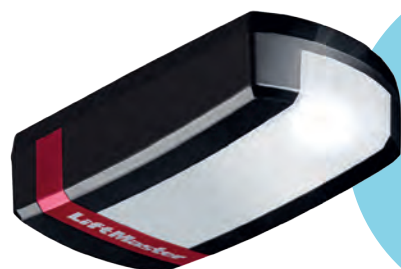
² May require an external adapter depending on the model and year of your vehicle. Visit HomeLink.com for additional information.

LM130EVF 1300N
MYQ DC GARAGE DOOR OPENER
FOR DOORS UP TO 200 KG



LM100EVF MYQ DC GARAGE DOOR OPENER

Maintenance-free, ultra-quiet including LED light.



KEY FEATURES

SPACE-SAVING

Design maximizes versatility

LED LIGHT

LED turns on with activation

LIFTING

For doors up to 150 kg

MYQ

Built In



SMART

SPACE-SAVING DESIGN OPENS UP THE CEILING.

BELT DRIVE SYSTEM FOR POWERFUL PERFORMANCE.

SOFT-START AND SOFT-STOP FOR SMOOTH OPERATION.

MYQ MOBILE APP LETS USERS RECEIVE ALERTS AND CONTROL THE OPENER FROM ANYWHERE.

QUIET AND RELIABLE

QUIET DC MOTOR ELIMINATES NOISE AND VIBRATIONS THROUGH THE CEILING AND PROVIDES SMOOTH OPERATION.

HEAVY-LIFTING POWER OPERATES DOORS UP TO 150 KG.

MAINTENANCE-FREE BELT DRIVE ENSURES QUIET & DURABLE OPERATION.

WARRANTY MOTOR: 8 YEARS, CONTROL BOARD: 5 YEARS, ACCESSORIES: 2 YEARS.

SECURE & SAFE

AUTOMATIC GARAGE DOOR OPENERS IMPEDE UNAUTHORIZED ACCESS TO THE GARAGE.

TIMER-TO-CLOSE AUTOMATICALLY CLOSES THE DOOR AFTER A PRESET AMOUNT OF TIME.

EVOLUTION RADIO (SECURITY+ 2.0®) SENDS A NEW CODE WITH EVERY REMOTE CLICK.

AUTOMATIC FORCE SETTING & OBSTACLE DETECTION.

INCLUDED ACCESSORIES:

4-CHANNEL REMOTE CONTROL

Operates up to 4 openers. Compact to provide quick, easy garage access.



TX4EVF

2-BUTTON WIRELESS WALL CONTROL

Operates up to 2 openers. Control your garage door without a remote control.



128EV

POWERFUL ADD-ONS:

INTERNET GATEWAY

MyQ® technology that connects to the internet and allows monitoring and control of the garage door opener.



828EV

GARAGE DOOR MONITOR

MyQ enabled technology allows monitoring and closing up to four garage doors from any room in the house.



829EV

WIRELESS KEYPAD

Provides convenient, secure access from outside the garage with a 4-digit PIN, temporary PIN possible.



747EV

LED FLASHING LIGHT

Lamp flashes while the drive is in action. Applicable for all garage door and gate door openers.



FLA1-LED

FAILSAFE SAFETY SENSOR

2-wire system with LiftMaster signal IP44, range 15 meters.



772E

MASTERFUL ENGINEERING.

MOTOR

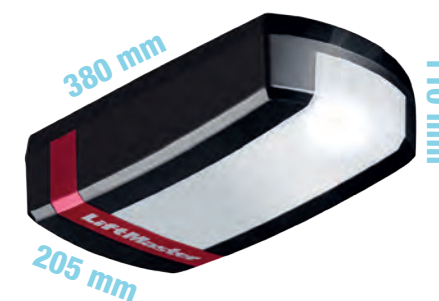
- Residential-Duty 24 V DC
- Automatic Thermal Protection
- Permanent Lubrication
- Operating Temperature: -30°C to 55°C

POWER

- 230-240 V AC
- 50/60 Hz Voltage
- 0.8 W Stand-by Power
- 80 cm Power Cord (Euro plug)¹

MECHANICS

- **High Quality** Chassis and Cover
- **Reliable & Quiet** Belt Drive Mechanism
- **Automatic** Force Setting
- **Electronic Limits** for Easy Setup
- **Maintenance-Free** Operation thanks to Belt Drive
- **90° Rotation of Power Head** for Space Saving



110 mm

380 mm

205 mm

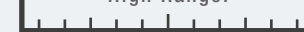
MYQ DC GARAGE DOOR OPENER
FOR DOORS UP TO 150 KG.

1000N

STANDARD SPECS.

EVOLUTION RADIO (Security+ 2.0®)

High Range:



- 4-Button Remote Control (TX4EVF)
- Remote Control: 868 MHz Tri-Band
- Garage Door Opener: Frequency Agile on 433 and 868 MHz
- Copy-Protected Coding

MyQ RADIO

433/868 MHz

- Provides 2-way communication from garage door opener and MyQ accessories.
- Enables monitoring and control of garage door openers controls via smartphone, tablet or computer.
- Receiver with 180 memory registers.

HOMELINK® COMPATIBLE
(VERSION V OR SOFTWARE REV. 8)²

LIGHTING LED LIGHT



- LED turns on with activation
- Turns off 2.5 minutes after operation
- 0.8 W Stand-by Power

Max.
200 mm

Per second
for door
to move
upward

Max.
200 mm

Per second
for door
to move
downward

SHIPPING.

SHIPPING WEIGHT (in kg)



5.5
CARTON

- CARTON: 39.5 cm x 19.5 cm x 24 cm
- Garage Door Opener Head (1000N)
- Two 4-Button Remote Control (TX4EVF)
- 2-Button Wireless Wall Control (128EV)

SAFETY AND SECURITY.

- External Quick Release (optional)
- Automatic Trolley Reconnect
- Down Safety Reverse
- Up Safety Stop
- Flashing Light Connector
- Door-in-Door Connector
- Timer to Close (automatic close) Programming (when safety sensors connected)



¹ UK adapter available.

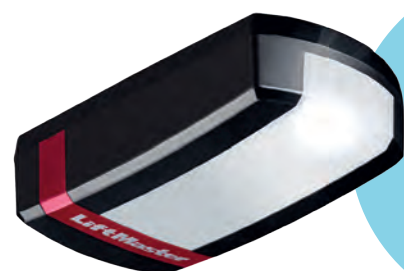
² May require an external adapter depending on the model and year of your vehicle. Visit [HomeLink.com](https://www.liftmaster.com) for additional information.

LM100EVF 1000N
MYQ DC GARAGE DOOR OPENER
FOR DOORS UP TO 150 KG



LM80EVF MYQ DC GARAGE DOOR OPENER

Maintenance-free, ultra-quiet including LED light.



KEY FEATURES

SPACE-SAVING

Design maximizes versatility

LED LIGHT

LED turns on with activation

LIFTING

For doors up to 130 kg

MYQ

Built In



SMART

SPACE-SAVING DESIGN OPENS UP THE CEILING.

BELT DRIVE SYSTEM FOR POWERFUL PERFORMANCE.

SOFT-START AND SOFT-STOP FOR SMOOTH OPERATION.

MYQ MOBILE APP LETS USERS RECEIVE ALERTS AND CONTROL THE OPENER FROM ANYWHERE.

QUIET AND RELIABLE

QUIET DC MOTOR ELIMINATES NOISE AND VIBRATIONS THROUGH THE CEILING AND PROVIDES SMOOTH OPERATION.

HEAVY-LIFTING POWER OPERATES DOORS UP TO 130 KG.

MAINTENANCE-FREE BELT DRIVE ENSURES QUIET & DURABLE OPERATION.

WARRANTY MOTOR: 6 YEARS, CONTROL BOARD: 5 YEARS, ACCESSORIES: 2 YEARS.

SECURE & SAFE

AUTOMATIC GARAGE DOOR OPENERS IMPEDE UNAUTHORIZED ACCESS TO THE GARAGE.

TIMER-TO-CLOSE AUTOMATICALLY CLOSES THE DOOR AFTER A PRESET AMOUNT OF TIME.

EVOLUTION RADIO (SECURITY+ 2.0®) SENDS A NEW CODE WITH EVERY REMOTE CLICK.

AUTOMATIC FORCE SETTING & OBSTACLE DETECTION.

INCLUDED ACCESSORIES:

4-CHANNEL REMOTE CONTROL

Operates up to 4 openers. Compact to provide quick, easy garage access.



TX4EVF

2-BUTTON WIRELESS WALL CONTROL

Operates up to 2 openers. Control your garage door without a remote control.



128EV

POWERFUL ADD-ONS:

INTERNET GATEWAY

MyQ® technology that connects to the internet and allows monitoring and control of the garage door opener.



828EV

GARAGE DOOR MONITOR

MyQ enabled technology allows monitoring and closing up to four garage doors from any room in the house.



829EV

WIRELESS KEYPAD

Provides convenient, secure access from outside the garage with a 4-digit PIN, temporary PIN possible.



747EV

LED FLASHING LIGHT

Lamp flashes while the drive is in action. Applicable for all garage door and gate door openers.



FLA1-LED

FAILSAFE SAFETY SENSOR

2-wire system with LiftMaster signal IP44, range 15 meters.



772E

MASTERFUL ENGINEERING.

MOTOR

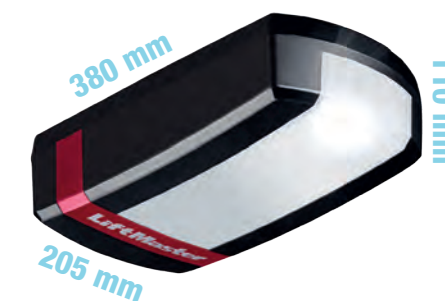
- Residential-Duty 24 V DC
- Automatic Thermal Protection
- Permanent Lubrication
- Operating Temperature: -30°C to 55°C

POWER

- 230-240 V AC
- 50/60 Hz Voltage
- 0.8 W Stand-by Power
- 80 cm Power Cord (Euro plug)¹

MECHANICS

- **High Quality** Chassis and Cover
- **Reliable & Quiet** Belt Drive Mechanism
- **Automatic** Force Setting
- **Electronic Limits** for Easy Setup
- **Maintenance-Free** Operation thanks to Belt Drive
- **90° Rotation of Power Head** for Space Saving



110 mm

380 mm

205 mm

MYQ DC GARAGE DOOR OPENER
FOR DOORS UP TO 130 KG.

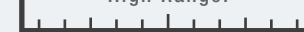
800N

STANDARD SPECS.

SECURE

EVOLUTION RADIO (Security+ 2.0®)

High Range:



- 4-Button Remote Control (TX4EVF)
- Remote Control: 868 MHz Tri-Band
- Garage Door Opener: Frequency Agile on 433 and 868 MHz
- Copy-Protected Coding

SMART

MyQ RADIO

433/868 MHz

- Provides 2-way communication from garage door opener and MyQ accessories.
- Enables monitoring and control of garage door openers controls via smartphone, tablet or computer.
- Receiver with 180 memory registers.

HOMELINK® COMPATIBLE
(VERSION V OR SOFTWARE REV. 8)²

ELECTRICAL

LIGHTING LED LIGHT



- LED turns on with activation
- Turns off 2.5 minutes after operation
- 0.8 W Stand-by Power

Max.
200 mm

Per second
for door
to move
upward

Max.
200 mm

Per second
for door
to move
downward

SHIPPING.

SHIPPING WEIGHT (in kg)



5.5
CARTON

- CARTON: 39.5 cm x 19.5 cm x 24 cm
- Garage Door Opener Head (800N)
- Two 4-Button Remote Control (TX4EVF)
- 2-Button Wireless Wall Control (128EV)

SAFETY AND SECURITY.

- External Quick Release (optional)
- Automatic Trolley Reconnect
- Down Safety Reverse
- Up Safety Stop
- Flashing Light Connector
- Door-in-Door Connector
- Timer to Close (automatic close) Programming (when safety sensors connected)



¹ UK adapter available.

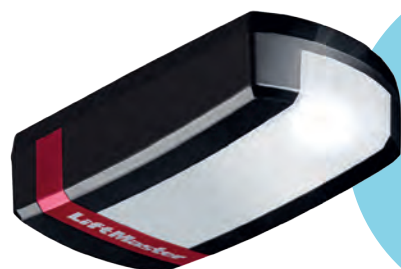
² May require an external adapter depending on the model and year of your vehicle. Visit [HomeLink.com](https://www.liftmaster.com) for additional information.

LM80EVF 800N
MYQ DC GARAGE DOOR OPENER
FOR DOORS UP TO 130 KG



LM60EVF MYQ DC GARAGE DOOR OPENER

Maintenance-free, ultra-quiet including LED light.



KEY FEATURES

SPACE-SAVING

Design maximizes versatility

LED LIGHT

LED turns on with activation

LIFTING

For doors up to 100 kg

MYQ

Built In



SMART

SPACE-SAVING DESIGN OPENS UP THE CEILING.

BELT DRIVE SYSTEM FOR POWERFUL PERFORMANCE.

SOFT-START AND SOFT-STOP FOR SMOOTH OPERATION.

MYQ MOBILE APP LETS USERS RECEIVE ALERTS AND CONTROL THE OPENER FROM ANYWHERE.

QUIET AND RELIABLE

QUIET DC MOTOR ELIMINATES NOISE AND VIBRATIONS THROUGH THE CEILING AND PROVIDES SMOOTH OPERATION.

HEAVY-LIFTING POWER OPERATES DOORS UP TO 100 KG.

MAINTENANCE-FREE BELT DRIVE ENSURES QUIET & DURABLE OPERATION.

WARRANTY MOTOR: 5 YEARS, CONTROL BOARD: 5 YEARS, ACCESSORIES: 2 YEARS.

SECURE & SAFE

AUTOMATIC GARAGE DOOR OPENERS IMPEDE UNAUTHORIZED ACCESS TO THE GARAGE.

TIMER-TO-CLOSE AUTOMATICALLY CLOSES THE DOOR AFTER A PRESET AMOUNT OF TIME.

EVOLUTION RADIO (SECURITY+ 2.0®) SENDS A NEW CODE WITH EVERY REMOTE CLICK.

AUTOMATIC FORCE SETTING & OBSTACLE DETECTION.

INCLUDED ACCESSORIES:

2-CHANNEL REMOTE CONTROL

Operates up to 4 openers. Compact to provide quick, easy garage access.



TX4EVF

POWERFUL ADD-ONS:

INTERNET GATEWAY

MyQ® technology that connects to the internet and allows monitoring and control of the garage door opener.



828EV

GARAGE DOOR MONITOR

MyQ enabled technology allows monitoring and closing up to four garage doors from any room in the house.



829EV

2-BUTTON WIRELESS WALL CONTROL

Operates up to 2 openers. Control your garage door without a remote control.



128EV

WIRELESS KEYPAD

Provides convenient, secure access from outside the garage with a 4-digit PIN, temporary PIN possible.



747EV

LED FLASHING LIGHT

Lamp flashes while the drive is in action. Applicable for all garage door and gate door openers.



FLA1-LED

FAILSAFE SAFETY SENSOR

2-wire system with LiftMaster signal IP44, range 15 meters.



772E

MASTERFUL ENGINEERING.

MOTOR

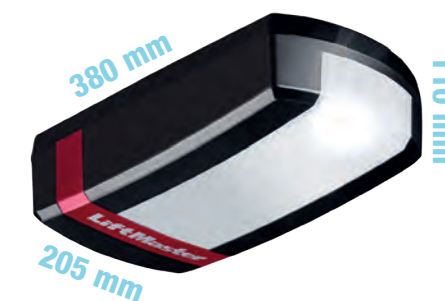
- Residential-Duty 24 V DC
- Automatic Thermal Protection
- Permanent Lubrication
- Operating Temperature: -30°C to 55°C

POWER

- 230-240 V AC
- 50/60 Hz Voltage
- 0.8 W Stand-by Power
- 80 cm Power Cord (Euro plug)¹

MECHANICS

- **High Quality** Chassis and Cover
- **Reliable & Quiet** Belt Drive Mechanism
- **Automatic** Force Setting
- **Electronic Limits** for Easy Setup
- **Maintenance-Free** Operation thanks to Belt Drive
- **90° Rotation of Power Head** for Space Saving



110 mm

380 mm

205 mm

MYQ DC GARAGE DOOR OPENER
FOR DOORS UP TO 100 KG.

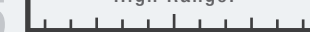
600N

STANDARD SPECS.

SECURE

EVOLUTION RADIO (Security+ 2.0®)

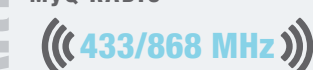
High Range:



- 4-Button Remote Control (TX4EVF)
- Remote Control: 868 MHz Tri-Band
- Garage Door Opener: Frequency Agile on 433 and 868 MHz
- Copy-Protected Coding

SMART

MyQ RADIO



- Provides 2-way communication from garage door opener and MyQ accessories.
- Enables monitoring and control of garage door openers controls via smartphone, tablet or computer.
- Receiver with 180 memory registers.

HOMELINK® COMPATIBLE
(VERSION V OR SOFTWARE REV. 8)²

ELECTRICAL

LIGHTING LED LIGHT



- LED turns on with activation
- Turns off 2.5 minutes after operation
- 0.8 W Stand-by Power

Max.
160 mm

Per second
for door
to move
upward

Max.
160 mm

Per second
for door
to move
downward

SHIPPING.

SHIPPING WEIGHT (in kg)



CARTON: 39.5 cm x 19.5 cm x 24 cm

- Garage Door Opener Head (600N)
- Two 4-Button Remote Control (TX4EVF)

SAFETY AND SECURITY.

- External Quick Release (optional)
- Automatic Trolley Reconnect
- Down Safety Reverse
- Up Safety Stop
- Flashing Light Connector
- Door-in-Door Connector
- Timer to Close (automatic close) Programming (when safety sensors connected)



¹ UK adapter available.

² May require an external adapter depending on the model and year of your vehicle. Visit [HomeLink.com](https://www.liftmaster.com) for additional information.

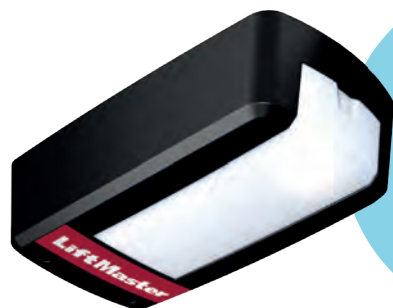
LM60EVF 600N
MYQ DC GARAGE DOOR OPENER
FOR DOORS UP TO 100 KG



LM55EVF DC GARAGE DOOR OPENER

Maintenance-free, ultra-quiet including LED light.

KEY FEATURES



SPACE-SAVING

Design maximizes versatility

LED LIGHT

LED turns on with activation

LIFTING

For doors up to 90 kg



SMART

SPACE-SAVING DESIGN OPENS UP THE CEILING.

BELT DRIVE SYSTEM FOR POWERFUL PERFORMANCE.

SOFT-START AND SOFT-STOP FOR SMOOTH OPERATION.

QUIET AND RELIABLE

QUIET DC MOTOR ELIMINATES NOISE AND VIBRATIONS THROUGH THE CEILING AND PROVIDES SMOOTH OPERATION.

HEAVY-LIFTING POWER OPERATES DOORS UP TO 90 KG.

MAINTENANCE-FREE BELT DRIVE ENSURES QUIET & DURABLE OPERATION.

WARRANTY MOTOR: 3 YEARS, CONTROL BOARD: 3 YEARS, ACCESSORIES: 2 YEARS.

SECURE & SAFE

AUTOMATIC GARAGE DOOR OPENERS IMPEDE UNAUTHORIZED ACCESS TO THE GARAGE.

TIMER-TO-CLOSE AUTOMATICALLY CLOSES THE DOOR AFTER A PRESET AMOUNT OF TIME.

EVOLUTION RADIO (SECURITY+ 2.0®) SENDS A NEW CODE WITH EVERY REMOTE CLICK.

AUTOMATIC FORCE SETTING & OBSTACLE DETECTION.

INCLUDED ACCESSORIES:

4-CHANNEL REMOTE CONTROL

Operates up to 4 openers. Compact to provide quick, easy garage access.



TX4EVF

POWERFUL ADD-ONS:

2-BUTTON WIRELESS WALL CONTROL

Operates up to 2 openers. Control your garage door without a remote control.



128EV

WIRELESS KEYPAD

Provides convenient, secure access from outside the garage with a 4-digit PIN, temporary PIN possible.



747EV

ILLUMINATED PUSH BUTTON

Wired push button.



75EV

FAILSAFE SAFETY SENSOR

2-wire system with LiftMaster signal IP44, range 15 meters.



772E

MASTERFUL ENGINEERING.

MOTOR

- Residential-Duty 24 V DC
- Automatic Thermal Protection
- Permanent Lubrication
- Operating Temperature: -30°C to 55°C

POWER

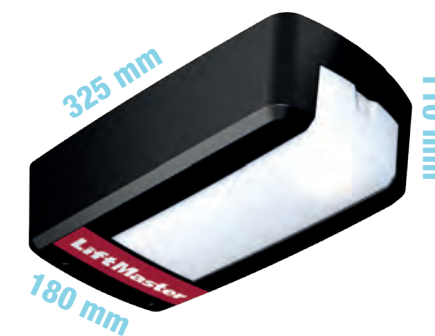
- 230-240 V AC
- 50/60 Hz Voltage
- 0.8 W Stand-by Power
- 80 cm Power Cord (Euro plug)¹

MECHANICS

- **High Quality** Chassis and Cover
- **Reliable & Quiet** Belt Drive Mechanism
- **Automatic** Force Setting
- **Electronic Limits** for Easy Setup
- **Maintenance-Free** Operation thanks to Belt Drive

600N

DC GARAGE DOOR OPENER
FOR DOORS UP TO 90 KG.



Max.
100 mm

Per second
for door
to move
upward

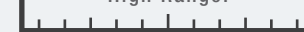
Max.
100 mm

Per second
for door
to move
downward

STANDARD SPECS.

EVOLUTION RADIO (Security+ 2.0®)

High Range:



- 4-Button Remote Control (TX4EVF)
- Remote Control: 868 MHz Tri-Band
- Garage Door Opener: Frequency Agile on 433 and 868 MHz
- Copy-Protected Coding

RADIO

433/868 MHz

- Provides 2-way communication from garage door opener and accessories.
- Receiver with 40 memory registers.

HOMELINK® COMPATIBLE
(VERSION V OR SOFTWARE REV. 8)²

LIGHTING LED LIGHT



- LED turns on with activation
- Turns off 2.5 minutes after operation
- 0.8 W Stand-by Power

SHIPPING.

SHIPPING WEIGHT
(in kg)



- CARTON: 39.5 cm x 24.3 cm x 23.5 cm
- Garage Door Opener Head (600N)
- Two 4-Button Remote Control (TX4EVF)

SAFETY AND SECURITY.

- External Quick Release (optional)
- Automatic Trolley Reconnect
- Down Safety Reverse
- Up Safety Stop
- Timer to Close (automatic close) Programming (when safety sensors connected)



¹ UK adapter available.

² May require an external adapter depending on the model and year of your vehicle. Visit [HomeLink.com](https://www.liftmaster.com) for additional information.

LM55EVF 600N
DC GARAGE DOOR OPENER
FOR DOORS UP TO 90 KG

EVOLUTION GARAGE DOOR OPENERS.



FEATURES OVERVIEW		LM55EVF	LM60EVF	LM80EVF	LM100EVF	LM130EVF
DOOR WIDTH						
1-PIECE GARAGE DOOR (mm)		3500	5000	5500	5750	6000
SECTIONAL GARAGE DOOR (mm)		3500	5000	5500	5750	6000
CANOPY DOOR (mm)		n/a	3000	3500	3500	4000
DOOR HEIGHT						
1-PIECE GARAGE DOOR		2250	2500	3000	3250	3500
SECTIONAL GARAGE DOOR		2250	2500	3000	3250	3500
CANOPY DOOR		n/a	2500	2500	2500	2500
GARAGE DOOR WEIGHT		90 kg	110 kg	130 kg	150 kg	200 kg
PULLING FORCE MAX. (N)		600	650	800	1000	1300
VOLTAGE		220-240 V AC	220-240 V AC	220-240 V AC	220-240 V AC	220-240 V AC
FREQUENCY		50/60 Hz	50/60 Hz	50/60 Hz	50/60 Hz	50/60 Hz
SOFT-START - SOFT-STOP / SPEED MAXIMUM (mm/SEC)		yes / 100	yes / 160	yes / 200	yes / 200	yes / 130
STANDBY POWER CONSUMPTION (WATT)		max. 0.8	max. 0.8	max. 0.8	max. 0.8	max. 0.8
DUTY CYCLE		S2 - 4min	S2 - 4min	S2 - 4min	S2 - 4min	S2 - 4min
WARRANTY / CYCLES (UP/DOWN=1X)		5000	10.000	10.000	15.000	15.000
WARRANTY / YEARS FOR RESIDENTIAL USE		2	5	5	5	5
MOTOR WARRANTY / YEARS FOR THE MOTOR RESIDENTIAL USE		3	5	6	8	10
WARRANTY / YEARS FOR LOGIC BOARD		3	5	5	5	5
ROTATION OF POWER HEAD (SPACE SAVING OPTION)		no	yes	yes	yes	yes
AUTOMATIC LIGHT DELAY		yes 2.5 min	yes 2.5 min	yes 2.5 min	yes 2.5 min	yes 2.5min
ELECTRONIC TRAVEL PROGRAMMING		yes	yes	yes	yes	yes
MYQ SMART PHONE COMPATIBLE (WITH 828EV)		no	yes	yes	yes	yes
GARAGE DOOR MONITORING (UP/DOWN) AUDIBLE & VISIBLE (WITH 829EV)		no	yes	yes	yes	yes
APPLE (IOS), ANDROID COMPATIBLE (OPEN, CLOSE, MONITOR & ALERTS), WITH 828EV		no	yes/free	yes/free	yes/free	yes/free
AUTOMATIC FORCE LEARNING		yes	yes	yes	yes	yes
PUSH BUTTON CONNECTOR		yes	yes	yes	yes	yes
DOOR-IN-DOOR CONNECTOR		no	yes	yes	yes	yes
IR SENSOR CONTACT		yes	yes	yes	yes	yes
FLASHING LIGHT CONNECTOR		no	yes	yes	yes	yes
30V OUTPUT POWER FOR EXTERNAL RECEIVER		yes	yes	yes	yes	yes
UP-STOP-DOWN 2-CHANNEL PROGRAMMING W. TRANSMITTER		no	yes	yes	yes	yes
TIMER TO CLOSE (AUTOMATIC CLOSE) PROGRAMMING (WITH SAFETY SENSORS)		yes	yes	yes	yes	yes
2ND DOOR STOP POSITION PROGRAMMING		no	yes	yes	yes	yes
HOLIDAY MODE (DISABLE OF RADIO) USING 78EV		no	yes	yes	yes	yes
RECEIVER TYPE		EVO,6-Band	EVO,7-Band	EVO,7-Band	EVO,7-Band	EVO,7-Band
MEMORY		40	180	180	180	180
FREQUENCIES		433 & 868 MHz	433 & 868 MHz	433 & 868 MHz	433 & 868 MHz	433 & 868 MHz
TRANSMITTER CODING SCHEME		Evolution Radio (Security+ 2.0®)	Evolution Radio (Security+ 2.0®)	Evolution Radio (Security+ 2.0®)	Evolution Radio (Security+ 2.0®)	Evolution Radio (Security+ 2.0®)
TRANSMITTER TYPE (NUMBER OF CHANNELS)		4	4	4	4	4
RAIL PROFILE IN MM		30	30	30	30	30

LM3800TX DC JACKSHAFT DOOR OPENER

Maintenance-free, Jackshaft DC motor for smooth operation.



KEY FEATURES

- HEAVY-DUTY**
DC motor with automatic force sensing
- LIFTING**
For doors up to 130 kg
- SPACE-SAVING**
Design maximizes versatility



SMART

SPACE-SAVING DESIGN OPENS UP THE CEILING.

SOFT-START AND SOFT-STOP FOR SMOOTH OPERATION.

INCLUDED AUTOMATIC GARAGE DOOR LOCK MAKES THE GARAGE DOOR VIRTUALLY IMPENETRABLE.

QUIET AND RELIABLE

QUIET DC MOTOR ELIMINATES NOISE AND VIBRATIONS THROUGH THE CEILING AND PROVIDES SMOOTH OPERATION.

HEAVY LIFTING POWER OPERATES DOORS UP TO 130 KG.

WARRANTY MOTOR: 2 YEARS, ACCESSORIES: 2 YEARS.

SECURE & SAFE

AUTOMATIC GARAGE DOOR OPENERS IMPEDE UNAUTHORIZED ACCESS TO THE GARAGE.

TIMER-TO-CLOSE AUTOMATICALLY CLOSES THE DOOR AFTER A PRESET AMOUNT OF TIME.

EVOLUTION RADIO (SECURITY+ 2.0®) SENDS A NEW CODE WITH EVERY REMOTE CLICK.

AUTOMATIC FORCE SETTING & OBSTACLE DETECTION.

INCLUDED ACCESSORIES:

4-CHANNEL UNIVERSAL REMOTE CONTROL
Operates up to 4 openers. Compact to provide quick, easy garage access.



TX4UNIS

COLLAR
Ensures safe connection between the shaft and the opener.



E-LOCK
Deadbolts the garage door automatically every time it closes.



CABLE TENSION MONITOR
Increases safety and helps to prevent door from falling. Incl. cable.



POWERFUL ADD-ONS:

BATTERY BACK-UP
Battery status via LED
Ready for plug in, 24 V.
80 cm cable.



CM475

WIRELESS KEYPAD
Provides convenient, secure access from outside the garage with a 4-digit PIN.



9747E

FAILSAFE SAFETY SENSOR
2-wire system with LiftMaster signal
IP44, range 15 meters.



772E

MASTERFUL ENGINEERING.

MOTOR

- Heavy-Duty 24 V DC
- Automatic Thermal Protection
- Permanent Lubrication
- Operating Temperature: -30°C to 50°C

POWER

- 230-240 V AC
- 50 Hz Voltage
- 5 W Stand-by Power
- 90 cm Power Cord

MECHANICS

- **High Quality** Chassis and Cover
- **Reliable & Powerful** Direct drive „Jackshaft“
- **Automatic** Force Setting
- **Electronic Limits** for Easy Setup
- **Clutch** unlatch for manual operation

150 mm

40 Nm
DC DIRECT DRIVE „JACKSHAFT“
FOR DOORS UP TO 130 KG.

400 mm

170 mm



Max.
36 rpm

Rounds per minute for door to move upward

Max.
24 rpm

Rounds per minute for door to move downward

STANDARD SPECS.

SECURE

EVOLUTION RADIO (Security+ 2.0®)

High Range:



- 4-Button Remote Control (TX4UNIS)
- Remote Control: 433 MHz Tri-Band¹
- Jackshaft Door Opener: Frequency Agile on 433 MHz
- Copy-Protected Coding

SMART

RADIO

433 MHz

- Communication from jackshaft door opener and accessories.
- Receiver with 64 memory registers.

HOMELINK® COMPATIBLE
(VERSION V OR SOFTWARE REV. 8)²

SHIPPING.

SHIPPING WEIGHT
(in kg)

13
CARTON

- CARTON: 60.7 cm x 26.1 cm x 30 cm
- Jackshaft Door Opener (40Nm)
- Two 4-Button Remote Control (TX4UNIS)
- Collar, E-Lock and Cable Tension Monitor

SAFETY AND SECURITY.

- External Quick Release (optional)
- Down Safety Reverse
- Up Safety Stop
- Automatic Obstacle Detection
- Soft-Start / Soft-Stop
- Timer to Close (automatic close) Programming (when safety sensors connected)



¹ Tri-band on EVOLUTION Radio (Security+ 2.0®) coding only. TX4UNIS remote control is backwards compatible to all LiftMaster openers manufactured since 1997 with 433 MHz.

² May require an external adapter depending on the model and year of your vehicle. Visit HomeLink.com for additional information.

LM3800TX 40Nm
DC DIRECT DRIVE „JACKSHAFT“
FOR DOORS UP TO 130 KG

LM650EVGB DC ROLLING DOOR OPENER

Fast, silent & powerful DC motor with soft start and soft stop.



KEY FEATURES

- HEAVY-DUTY**
DC motor with automatic force sensing
- LIFTING**
For doors up to 130 kg
- SPACE-SAVING**
Design maximizes versatility

INCLUDED ACCESSORIES:

4-CHANNEL UNIVERSAL REMOTE CONTROL
Operates up to 4 openers. Compact to provide quick, easy garage access.



TX4UNI

2-BUTTON WIRELESS WALL CONTROL
Operates up to 2 openers. Control your garage door without a remote control.



128EV

POWERFUL ADD-ONS:

WIRELESS KEYPAD
Provides convenient, secure access from outside the garage with a 4-digit PIN, temporary PIN possible.



747EV

FAILSAFE SAFETY SENSOR
2-wire system with LiftMaster signal IP44, range 15 meters.



772E

MASTERFUL ENGINEERING.

MOTOR



- Heavy-Duty 12 V DC
- Automatic Thermal Protection
- Permanent Lubrication
- Operating Temperature: -30°C to 50°C

POWER



- 230-240 V AC
- 50/60 Hz Voltage
- 0.8 W Stand-by Power
- 80 cm Power Cord UK

MECHANICS



- High Quality Chassis and Cover
- Reliable & Powerful Direct Drive Mechanism
- Automatic Force Setting
- Electronic Limits for Easy Setup
- Maintenance-Free Operation



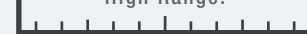
DC DIRECT DRIVE „ROLLING DOOR”
FOR DOORS UP TO 130 KG.

STANDARD SPECS.

SECURE

EVOLUTION RADIO (Security+ 2.0®)

High Range:



- 4-Button Remote Control (TX4UNI)
- Remote Control: 433 MHz Tri-Band¹
- Rolling Door Opener: Frequency Agile on 433.30, 433.92 and 434.54 MHz
- Copy-Protected Coding

SMART

RADIO



433 MHz



- Provides 2-way communication from rolling door opener and accessories.
- Receiver with 64 memory registers.

HOMELINK® COMPATIBLE
(VERSION V OR SOFTWARE REV. 8)²

ELECTRICAL

LIGHTING LED LIGHT



- LED turns on with activation
- Turns off 2.5 minutes after operation
- 0.8 W Stand-by Power

SHIPPING.

SHIPPING WEIGHT (in kg)



7.2
CARTON

- CARTON: 50.2 cm x 28.1 cm x 23.3 cm
- Rolling Door Opener (500N)
- Two 4-Button Remote Control (TX4UNI)
- 2-Button Wireless Wall Control (128EV)

SAFETY AND SECURITY.

- External Quick Release (optional)
- Down Safety Reverse
- Up Safety Stop
- Soft-Start and Soft-Stop
- Timer to Close (automatic close) Programming (when safety sensors connected)



¹Tri-band on EVOLUTION Radio (Security+ 2.0®) coding only. TX4UNI remote control is backwards compatible to all LiftMaster openers manufactured since 1997.

²May require an external adapter depending on the model and year of your vehicle. Visit HomeLink.com for additional information.



SMART

SPACE-SAVING DESIGN OPENS UP THE CEILING.

SOFT-START AND SOFT-STOP FOR SMOOTH OPERATION.

QUIET AND RELIABLE

QUIET DC MOTOR ELIMINATES NOISE AND VIBRATIONS THROUGH THE CEILING AND PROVIDES SMOOTH OPERATION.

HEAVY LIFTING POWER OPERATES DOORS UP TO 130 KG.

WARRANTY MOTOR: 2 YEARS, ACCESSORIES: 2 YEARS.

SECURE & SAFE

AUTOMATIC GARAGE DOOR OPENERS IMPEDE UNAUTHORIZED ACCESS TO THE GARAGE.

TIMER-TO-CLOSE AUTOMATICALLY CLOSES THE DOOR AFTER A PRESET AMOUNT OF TIME.

EVOLUTION RADIO (SECURITY+ 2.0®) SENDS A NEW CODE WITH EVERY REMOTE CLICK.

AUTOMATIC FORCE SETTING & OBSTACLE DETECTION.

LM650EVGB 500N
DC ROLLING DOOR OPENER
FOR DOORS UP TO 130 KG

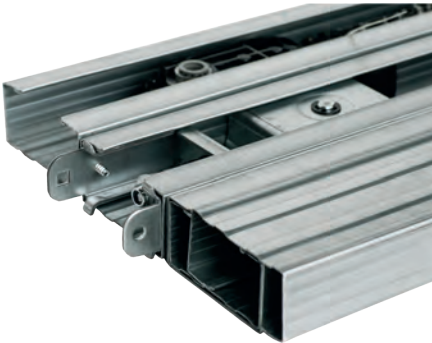
ACCESSORIES.

C-Rail.

ONLY ONE RAIL FOR ALL GARAGE DOOR OPENERS (LM55EVS/F, LM60EVS/F, LM80EVS/F, LM100EVS/F & LM130EVS/F)!
AVAILABLE IN 1, 2 OR 3 PARTS.

8023CR5 RAIL	8025CR5 RAIL	8030CR5 RAIL	8225CR5 RAIL	8323CR5 RAIL
<ul style="list-style-type: none">• 1-piece, 100% pre-assembled and part-tensioned• Trolley travel: 2520 mm• Total length: 3000 mm	<ul style="list-style-type: none">• 1-piece, 100% pre-assembled and part-tensioned• Trolley travel: 2720 mm• Total length: 3190 mm	<ul style="list-style-type: none">• 1-piece, 100% pre-assembled and part-tensioned• Trolley travel: 3225 mm• Total length: 3700 mm	<ul style="list-style-type: none">• 2-piece & one splices, pre-assembled (shipped folded)• Trolley travel: 2720 mm• Total length: 3190 mm	<ul style="list-style-type: none">• 3-piece & two splices, pre-assembled (shipped folded)• Trolley travel: 2520 mm• Total length: 3000 mm

- 30 mm rail profile
- Belt (Steel reinforced material, 100% maintenance free)
- Trolley with pre-assembled straight door arm (330 mm)
- Pre-installed disconnect rope and handle
- Permanent and momentary disconnect feature
- Curved door arm included (246 mm)
- Lintel (above door) bracket included
- Door installation bracket
- Hanging brackets (2) included packaging



Rail extensions.

810CR5-02 Rail extension for rail 8023CR5 & 8323CR5 <ul style="list-style-type: none">• 1-piece & 1 splice & new belt• Trolley travel: 3225 mm, total length: 3700 mm	840CR5 Rail extension for rail 8030CR5 <ul style="list-style-type: none">• 1-piece & 1 splice & new belt• Trolley travel: 4210 mm, total length: 6570 mm
--	---

All rails are made of steel in a 30 mm C-profile.

Remote controls.



- 041A4060 - CAR KIT CLIP HOLDER**
- Clip bracket for mounting the transmitter on the sun visor (TX2EV, TX4EV, TX4EVS, TX4UNI, TX4UNIS, TX4EVF and TX4UNIF)
 - Kit includes: clip, screwdriver and screws

ACCESSORIES.

Remote controls.



TX4EVF 4-CHANNEL TRANSMITTER 868 MHz EVO CODE
TX4UNIF 4-CHANNEL UNIVERSAL TRANSMITTER 433 MHz BILLION-, ROLLING- AND EVO CODE

The new transmitters, in our new distinguished car key type design are one of the highlights of the new EVF series. The matt black colour provides a very elegant accessory that one is proud to carry on the key chain. The simple operation via the extra large buttons offer additional comfort.

TX4EVF transmitters are included as standard on the openers of the EVF series (LM55EVF, LM60EVF, LM80EVF, LM100EVF and LM130EVF). **A blue LED** indicates that it is the **TX4EVF** at 868 MHz frequency.



The **TX4UNIF** universal transmitter can be used with any LiftMaster operator with Billion, Rolling or EVO code technology. The universal transmitter is available as a seperate accessory, has a **white LED** and operates on 433 MHz. It can replace all 433 MHz transmitters (TX4UNI/S, 94330E, 94333E, 94335E, 94334E as well as 4330E, 4333E, 4335E).

- TX4EVS - 4-Channel transmitter 868 MHz EVO Code**
- The sliding cover prevents the consumer from unintended operation.
 - Blue LED for battery control
 - Compatible with the operators LM55EVS/F, LM60EVS/F, LM80EVS/F, LM100EVS/F and LM130EVS/F.



- TX4UNIS - 4-Channel Universal transmitter with 433 MHz EVO, Rolling & Billion code**
- The sliding cover prevents the consumer from unintended operation.
 - Blue LED for battery control
 - Works with all LiftMaster operators with Billion-, Rolling- or EVO code technology. The following transmitters can be replaced by TX4UNIS, TX4UNI/F, 94330E, 94333E, 94335E, 94334E and 4330E, 4333E and 4335E, 94335E, 94334E as well as 4330E, 4333E, 4335E.



Wall controls.



- 128EV - WIRELESS WALL CONTROL**
- For Evolution radio
 - With 433 Mhz Rolling code 2 channels
 - Elegant design
 - Easy to install



- 78EV - MULTIFUNCTION WALL CONTROL**
- 4 function wired push button
 - Open/close the door
 - Switch on/off courtesy light
 - Switch on/off receiver
 - Train the transmitter without climbing up to the operator head



- 75EV - ILLUMINATED PUSH BUTTON**
- Wired push button
 - Illuminated

ACCESSORIES.

Convenience devices.



828EV - INTERNET GATEWAY
Revolutionary accessory with built-in MyQ technology that connects to the internet and allows monitoring and operating the garage door opener in or around your home or **from anywhere in the world** by using a smartphone, a tablet or a computer. It utilises a two-way communication system. **Easy and fast installation** through in-home router. No annual activation fee. Compatible with the following LiftMaster products: LM60EVS, LM80EVS, LM100EVS, LM130EVS.



829EV - GARAGE DOOR MONITOR
MyQ enabled technology allows **monitoring and closing up to four garage doors** from any room in the house. Green and red LEDs indicate whether the garage door is open or closed. Volume-controlled audible alert when the garage door is being opened. **Fast, easy installation.** Compatible with the following LiftMaster products: LM60EVS, LM80EVS, LM100EVS, LM130EVS.



747EV - WIRELESS KEYPAD
for Garage Door Openers with EVO code
9747E - WIRELESS KEYPAD
for 5580KTX, LM3800TX with 433Mhz Rolling code.
Open or close garage door without using a remote control or key. The LiftMaster Wireless Keyless Entry System can open the door using a private 4-digit code. Allows temporary access codes for visitors. Completely **wireless**, powered by one 9-volt battery (included). Weatherproof flip-up protective cover. **Backlit keypad** makes numbers easy to see, even in the dark.

Safety devices when using MyQ accessories.

In order to be compliant to current EU regulatory, IR sensors must be installed to use MyQ enabled accessories. The Garage Door Monitor 829EV as well as the Internet Gateway 828EV can be used with IR systems:



771EV - FAILSAFE SAFETY SENSOR

- For use with all LiftMaster garage door openers
- Current draw: 20 mA max., IP44
- Incl. LED indicates the IR sensor's continuity
- 2-wire system
- 10 meter range



G770E - SAFETY SENSOR

- Current draw: 13 mA max. / Operating voltage: 6 V, IP56
- For use with all LiftMaster garage door openers
- Red light LED indicates IR beam continuity

ACCESSORIES.

Safety devices.



771EVK - FAILSAFE SAFETY SENSOR

- For use with all LiftMaster garage door openers
- Current draw: 20 mA max., IP44
- Incl. LED indicator, wall fittings and 2 x 10 m cable
- 2-wire system
- 10 meter range



772E - FAILSAFE SAFETY SENSOR

- For use with all LiftMaster garage door openers
- Modern and attractive design
- IP44, range 15 meters
- 2-wire system with LiftMaster signal



772APE - MOUNTING PLATE FOR 772E

- Modern and attractive design
- Applicable with protective cover 772VPE



772VPE - PROTECTIVE COVER

- To prevent accidental damage and vandalism for 772E
- Modern and attractive design



600008 - IR SENSOR STAND – 530 mm

- Universally accommodates any IR sensor
- Powdercoat paint finish for rust resistance
- Heavy-duty steel construction



77C1 - ALUMINUM STAND 550 mm (PAIR)

- Aluminium stand for 772E
- Modern design
- Flexible use



77C2 - IR ALUMINUM STAND 1100 mm

- Aluminium stand for 772E
- Modern design
- Flexible use

ACCESSORIES.

Safety devices.



77X8P - MOUNTING PLATE

- Mounting plate for 77C1 and 77C2



FLA1-LED - 24V LED FLASHING LIGHT

- Lamp flashes while the drive is in action
- Applicable for all garage door and gate door openers
- Content: lamp with control system and mounting hardware



16200LM - DOOR-IN-DOOR SWITCH

- For use with pedestrian doors within a garage door
- Prevents the operator from activating when the switch/pedestrian door is open
- Open/close switch, easy to connect to garage door opener
- Includes: switch (IP65)

Quick releases for garage door openers.



1702EV - QUICK RELEASE LOCK

- For exterior manual operation
- 1.8 m industrial strength connecting cord
- Non-corrosive stainless steel face plate
- Extension sleeve for doors up to 50 mm
- Connection between cord and trolley release
- Includes: lock, sleeve, cord, connectors and two keys



EQL01EV - DOOR HANDLE QUICK RELEASE 2.5 m CORD LENGTH

- For exterior manual operation
- Use garage door handle and lock
- Includes: cable, hardware, adapters and instructions

ACCESSORIES.

Key lock devices.



100034 - KEYSWITCH 2-FUNCTION, FLUSH MOUNT

- Profile half cylinder
- 75 x 75 x 60 mm, ø 60 x 51 mm deep
- IP54, 3 keys



100041 - KEYSWITCH 2-FUNCTION, SURFACE MOUNT

- Profile half cylinder
- 75 x 75 x 50 mm
- IP54, 3 keys

Back-up battery.



CM475 - BATTERY BACK-UP FOR LM3800TX

- Battery status via LED
- Ready for plug in, 24 V
- 80 cm cable

Canopy door arm.



1703REV - CANOPY DOOR ARM – THE CHAMBERLAIN ARM™

- Especially designed for the unique requirements of British canopy doors
- Delivered pre-assembled with an integral safety guard
- Easy installation
- Can open a canopy door to the full horizontal position
- Includes: fully assembled door arm, straight connecting arm, hardware and mounting template

ACCESSORIES.

Receiver.



- 860EV - 3-CHANNEL RECEIVER**
- 3-channel receiver
 - Channel 1: up to 50 transmitters - Channel 2: up to 20 transmitters - Channel 3: up to 20 transmitters
 - Compact design
 - Compatible to all TX transmitters 868 MHz and 433 MHz
 - IP rating IP45 for outdoor use
 - Switching time : 250 ms
 - Relay contacts : max . 5 A , 28 V AC / DC
 - Voltage / Power : 9-30 V AC or 9-34 V DC, 50 mA

Other accessories.



- 026B0127 - UK-ADAPTER**
- Euro flat plug adapter to use in the UK



- 026B0177 - UK-ADAPTER**
- Round plug adapter to use in the UK



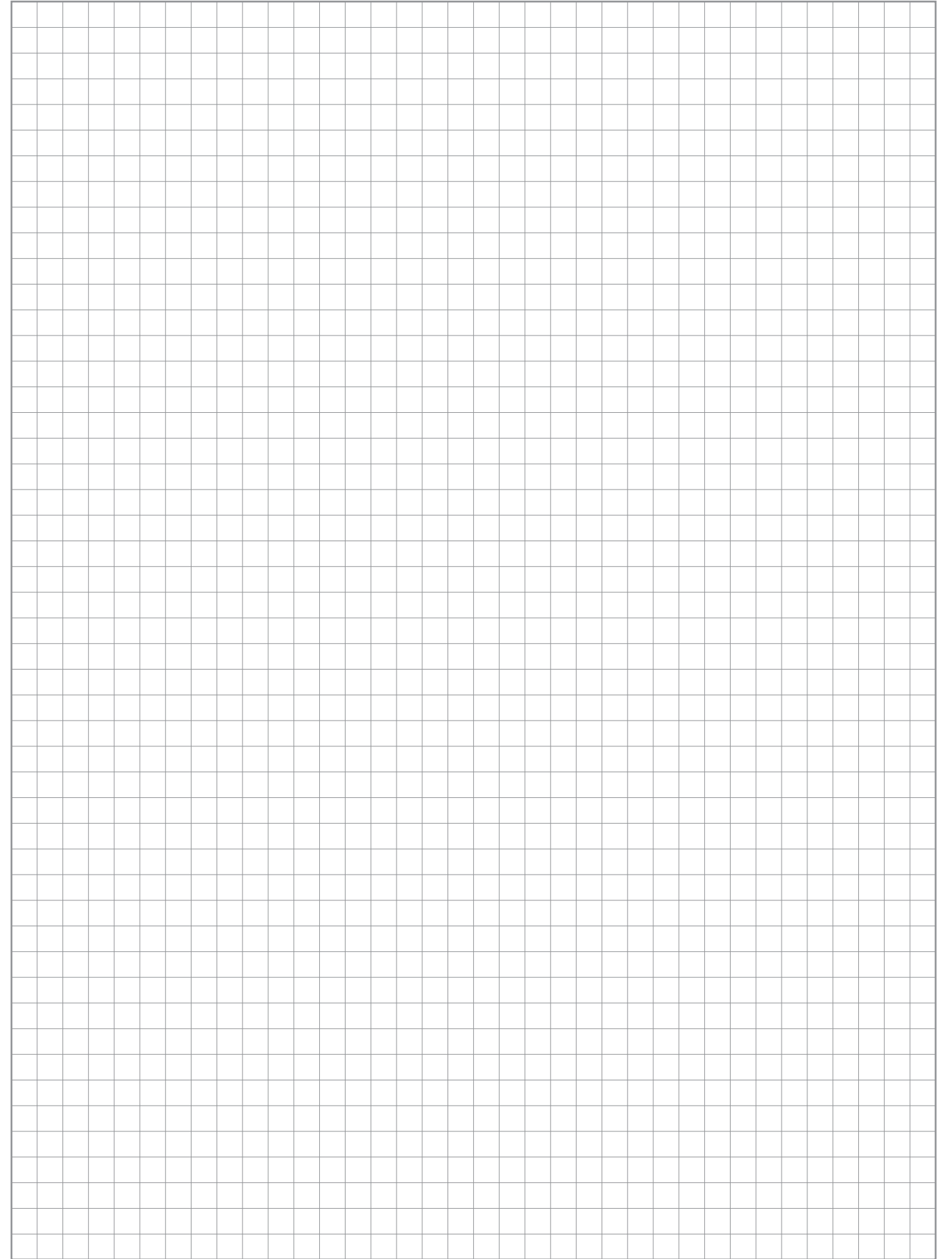
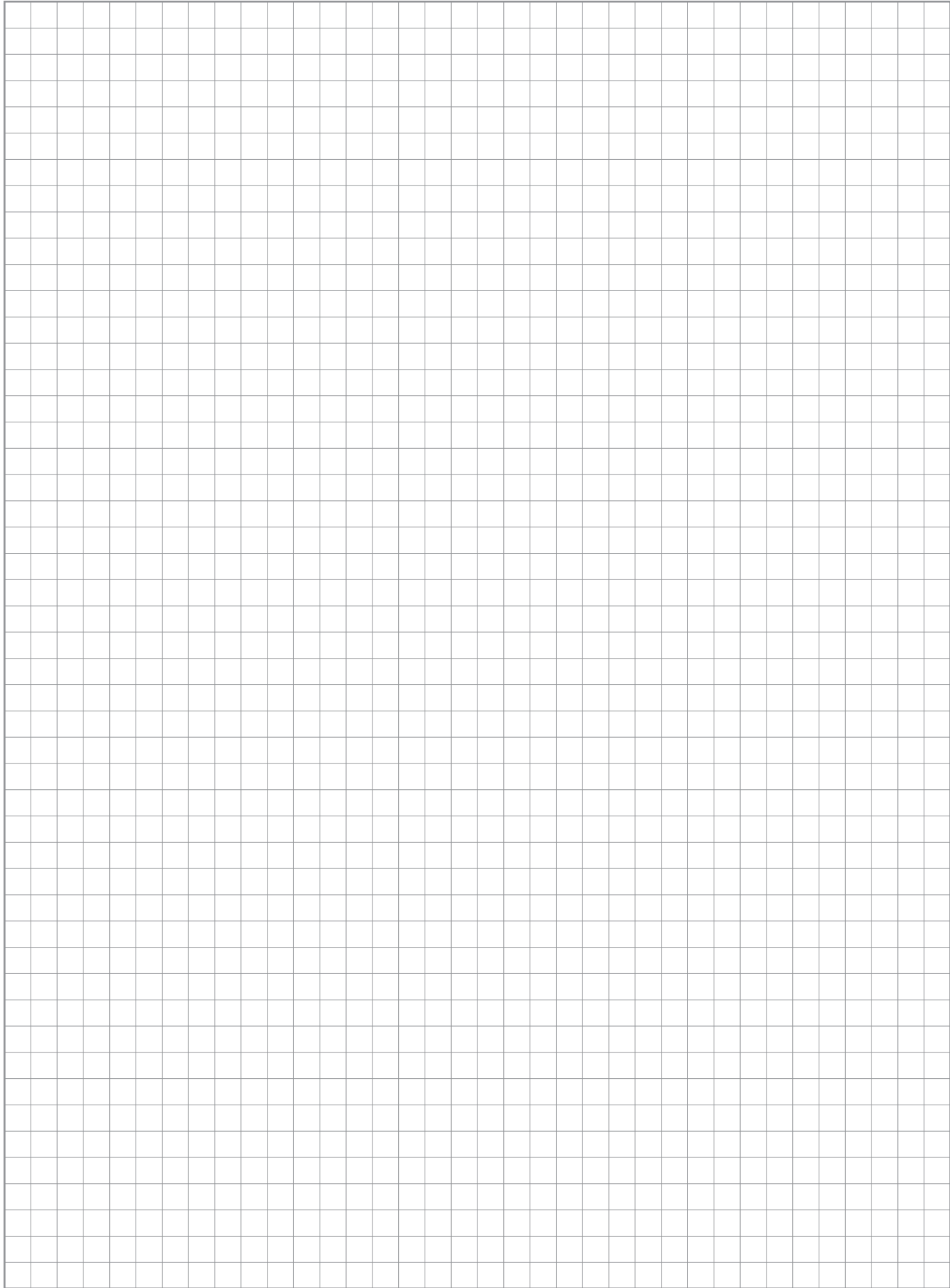
- G23015UNI-01 - 15 V AC TRANSFORMER**
- Euro flat plug, GB 3 pin
 - Cable – 1.8 m

SERVICE & CONTACT.

We are always happy to assist you with any questions you may have and to receive your feedback.
Call us @ +49 6838 907172 or send us an Email to info@chamberlain.com



GRACIAS
БЛАГОДАРИЮ
MERCI
THANK YOU
DANK U
DZIĘKUJĘ
TAKK
شكرا
TEŞEKKÜRLER
DANKE
... for choosing a LiftMaster product.

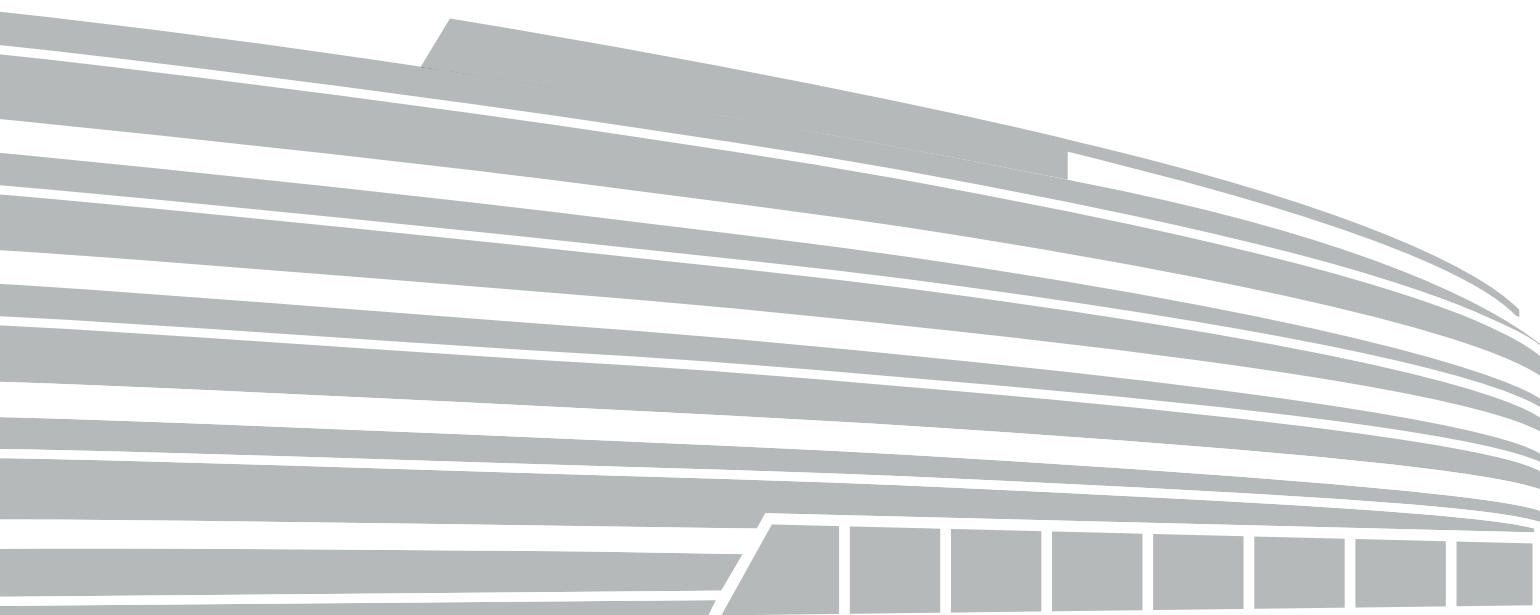


CHAMBERLAIN GROUP

We give the power of access and knowledge.

Chamberlain Group (CGI) is a global leader in access solutions and products. As the corporate parent company to LiftMaster®, Chamberlain®, Merlin® and Grifco®, we design and engineer residential garage door openers, commercial door operators and gate entry systems. Our products are connected through our innovative MyQ Technology, which empowers users to control or monitor their entry points through smartphone access.

FOR MORE INFORMATION, VISIT CHAMBERLAINGROUP.COM



LiftMaster®

© 2018 LiftMaster All Rights Reserved
Chamberlain GmbH, Alfred-Nobel-Str. 4, D-66793, Saarwellingen
LiftMaster.eu, WEEE-Reg.Nr. DE66256568
MyQ® is a registered trademark of Chamberlain Group
HomeLink® is a trademark of Gentex Corporation
9C18GD002 | V2